



OREFINDERS

ORX : TSXV | ORFDF : OTC

Exclusively Gold. Exclusively Abitibi.

DISCLAIMER

We are in the mineral exploration and development business. It is inherently risky, and all potential investors should be keenly aware of this.

*This presentation contains forward-looking statements. All statements, other than of historical fact, that address activities, events or developments that **Orefinders Inc.** believes, expects or anticipates will or may occur in the future (including, without limitation, statements regarding the estimation of mineral resources, exploration results, potential mineralization, potential mineral resources and mineral reserves) are forward-looking statements. Forward-looking statements are generally identifiable by use of the words “may”, “will”, “should”, “continue”, “expect”, “anticipate”, “estimate”, “believe”, “intend”, “plan” or “project” or the negative of these words or other variations on these words or comparable terminology. Forward-looking statements are subject to a number of risks and uncertainties, many of which are beyond **Orefinders Inc.**’s ability to control or predict, that may cause the actual results of the project to differ materially from those discussed in the forward-looking statements. Factors that could cause actual results or events to differ materially from current expectations include, among other things, without limitation, failure to establish estimated mineral resources, the possibility that future exploration results will not be consistent with **Orefinders Inc.**’s expectations, changes in world gold markets and other risks disclosed to the Canadian provincial securities regulatory authorities. Any forward-looking statement speaks only as of the date on which it is made and, except as may be required by applicable securities laws, **Orefinders Inc.** disclaims any intent or obligation to update any forward-looking statement. All currency numbers are in \$CAD unless otherwise stated.*



INVESTMENT HIGHLIGHTS

- 1** Consolidating Kirkland Lake via exposure to +1Moz gold
- 2** Multiple high-grade targets at Knight project
- 3** Multiple investments into company by Eric Sprott
- 4** 19% Ownership in Mistango (MIS:CSE); 4.8% in QC Copper and Gold (QCCU:TSXV); 26% in American Eagle Gold (private co)
- 5** Proven and aligned management team with a track record of creating shareholder value



CORPORATE OVERVIEW

Key Metrics

TSX Venture Exchange	TSXV: ORX
Shares Outstanding (m)	220.8
Warrants and Options (m)	60.2
Share Price (24/12/2020)	\$0.15
Basic Market Capitalization	\$33m
Cash and Marketable Securities	\$7m cash
Shareholder Structure	Eric Sprott – 9%
	Company Insiders – 6%
	Jubilee Gold Exploration – 6%
	Osisko Gold Royalties – 2%

Board

Stephen Stewart	CEO & Director
Alex Stewart	Director
Charles Beaudry	Director
Claude Bouchard	Director
Tony Moreau	Director

Share Price – TSXV: ORX



Breccia outcrop at Minto Zone on Knight Property



OREFINDERS

PROVEN TEAM

- Part of the Ore Group of Companies, led by Stephen Stewart
- Strong inhouse technical and financial expertise
- Insiders highly aligned with shareholders (insiders own +15%)
- Shareholder value creation via:
 - ✓ *Focusing on low risk/underappreciated assets in top mining districts*
 - ✓ *Acquiring assets at low valuation during cyclical low points*
 - ✓ *Expanding an economic resource to scale*
 - ✓ *Actively acquiring new high-quality exploration assets*
- Recent activities within team include:
 - ✓ *Mistango: ~30x return post gaining control in Oct-2019*
 - ✓ *Orefinders and Mistango: actively drilling, and backed by strategic investor Eric Sprott in 2020*
 - ✓ *Baselode Energy: 10x return since spin-out in 2020*



ORE GROUP



OREFINDERS



**MISTANGO RIVER
RESOURCES**



QC COPPER & GOLD



**BASELODE
ENERGY**



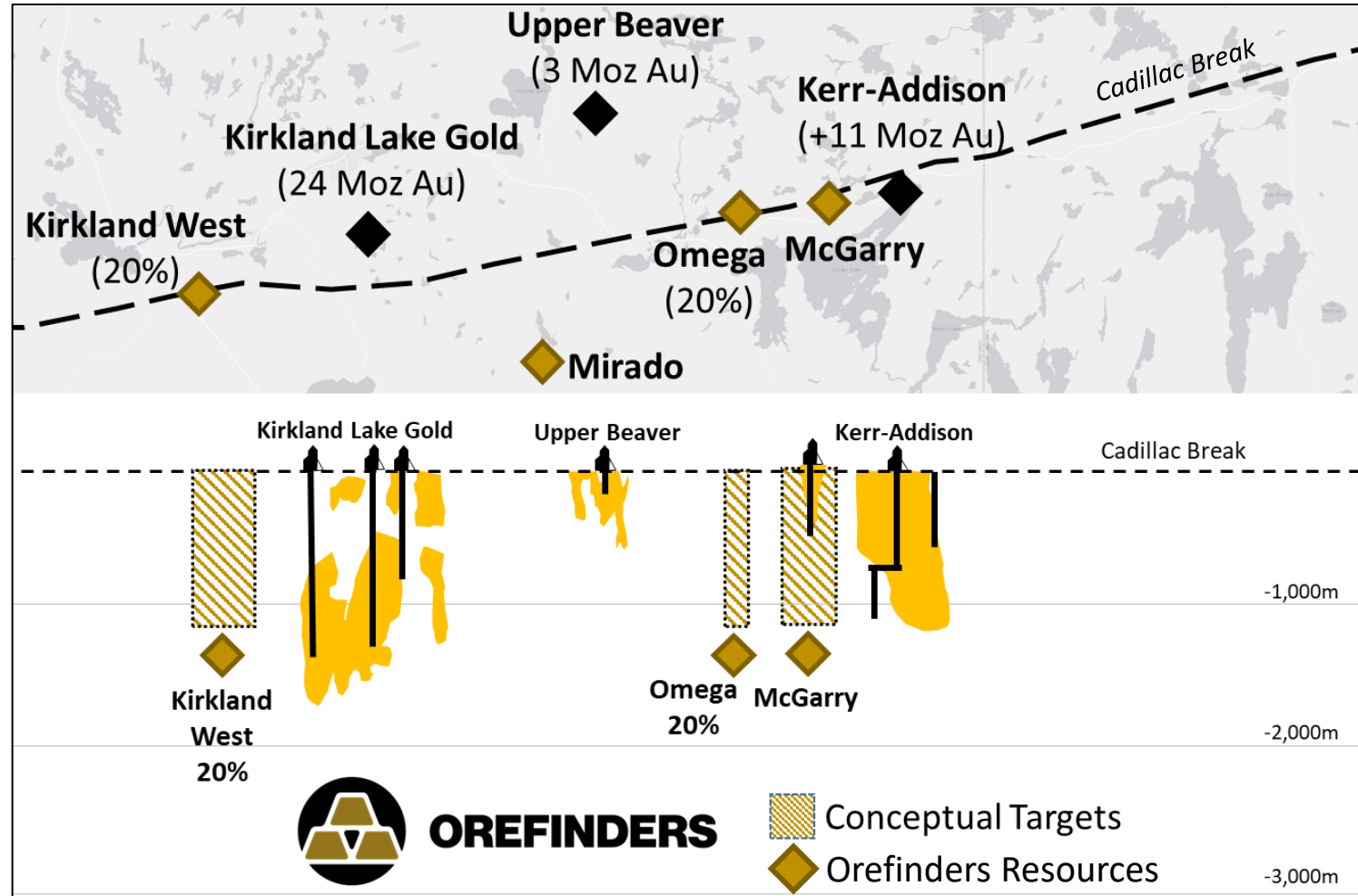
AMERICAN EAGLE GOLD



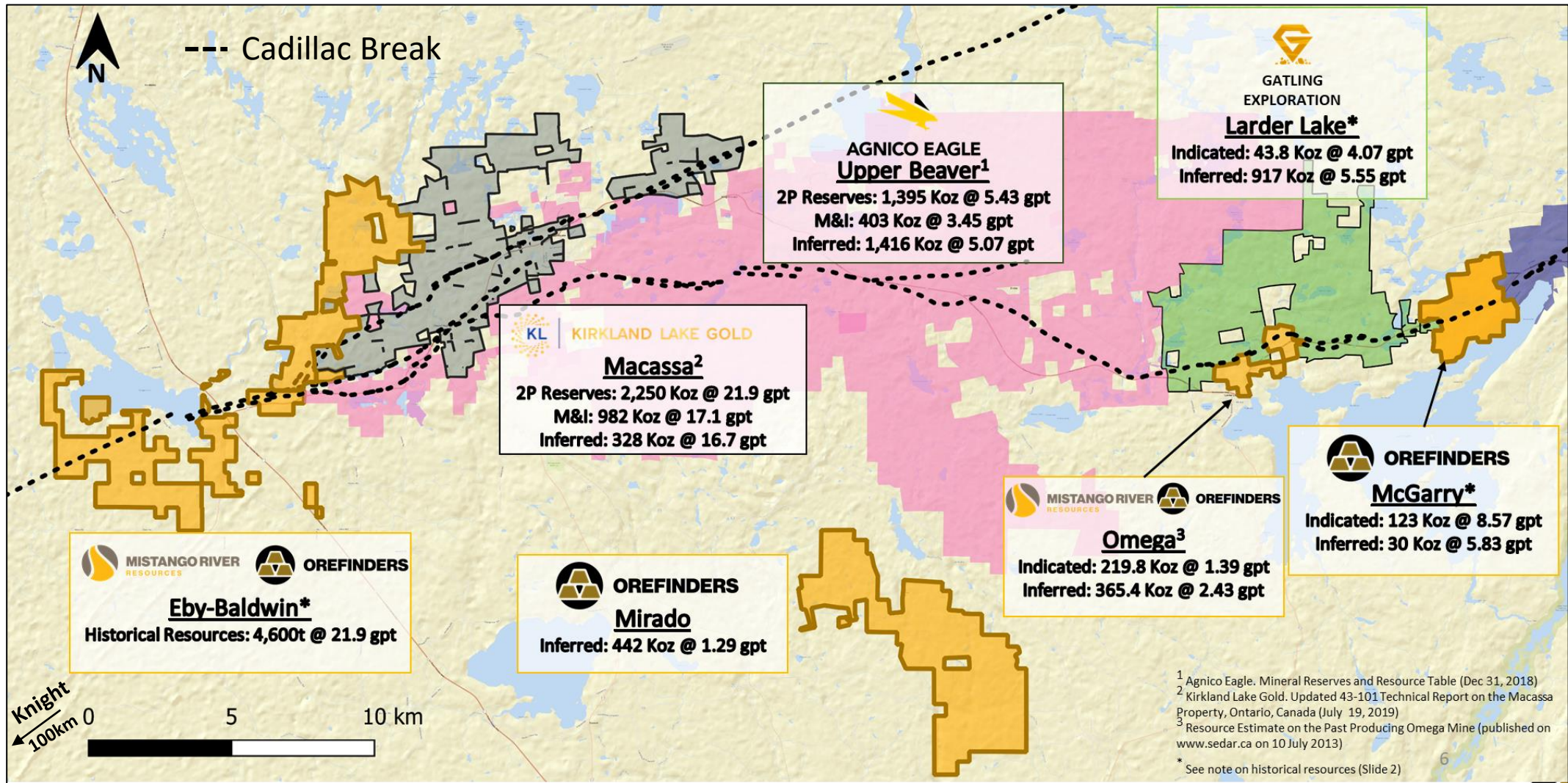
OREFINDERS

OREFINDERS BACKYARD: MONSTER DEPOSITS ON THE CADILLAC BREAK

- Cadillac Break is in southern Abitibi Greenstone Belt—the best endowed gold province in Canada
- Orefinders projects are proximal to +50Moz gold resources and production along the Cadillac Break



OREFINDERS IN KIRKLAND LAKE—OVER 1MOZ GOLD



KNIGHT GOLD PROJECT: 3 TARGETS IN A LARGE GOLD SYSTEM

1. Tyranite Mine

- Reported historical production: 31 Koz gold grading 5.04 g/t
- Associated with shear zone intruded by syenitic dykes
- Plunging mineralized trend open at depth

2. Porphyry Lake - High priority untested drill target

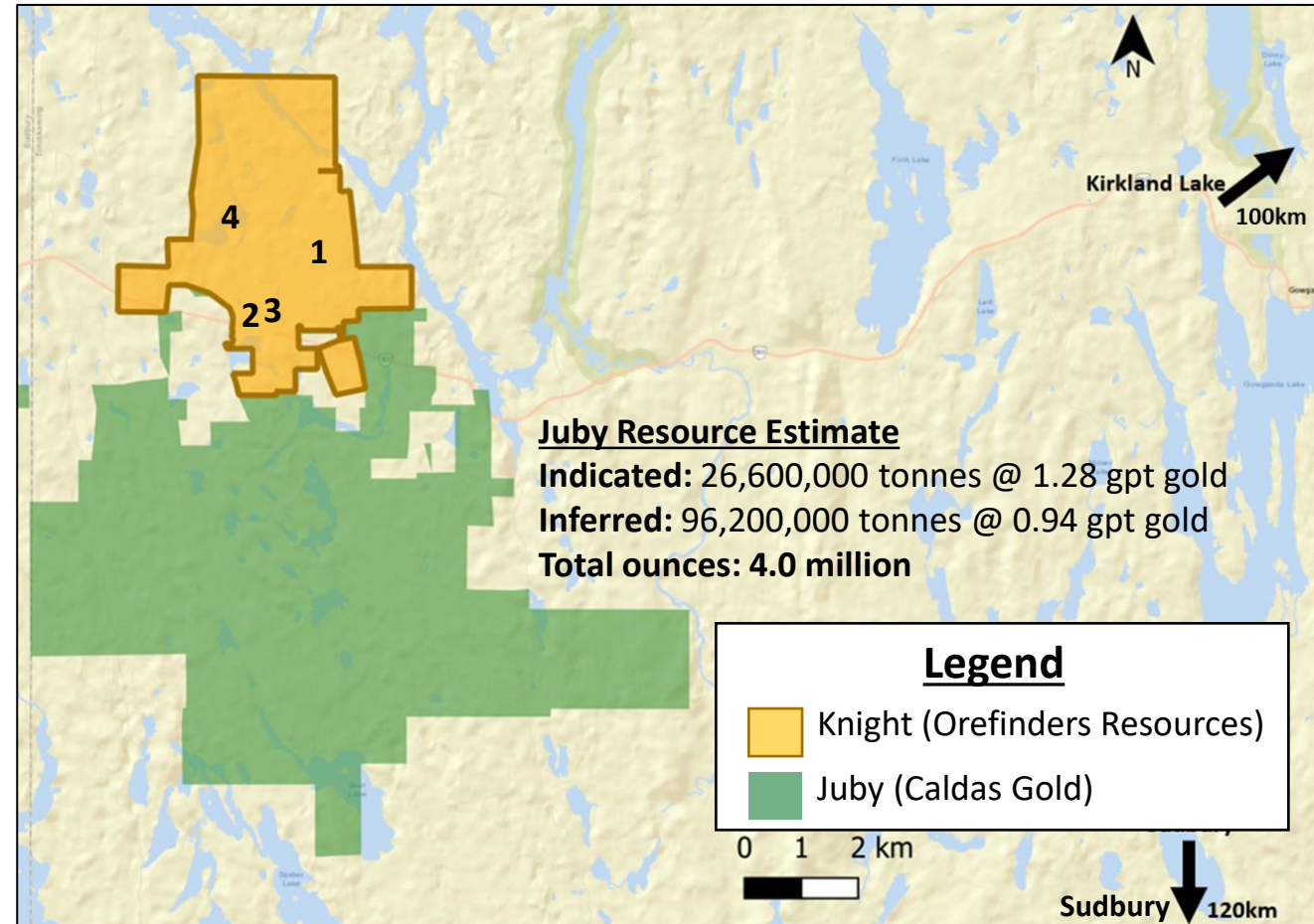
- Major geophysical (IP) anomaly that has not previously been drill tested
- Potential for a large gold- enriched hydrothermal system

3. More Minto Pipes

- New Breccia Pipe Targets like Minto
- Never been drill tested

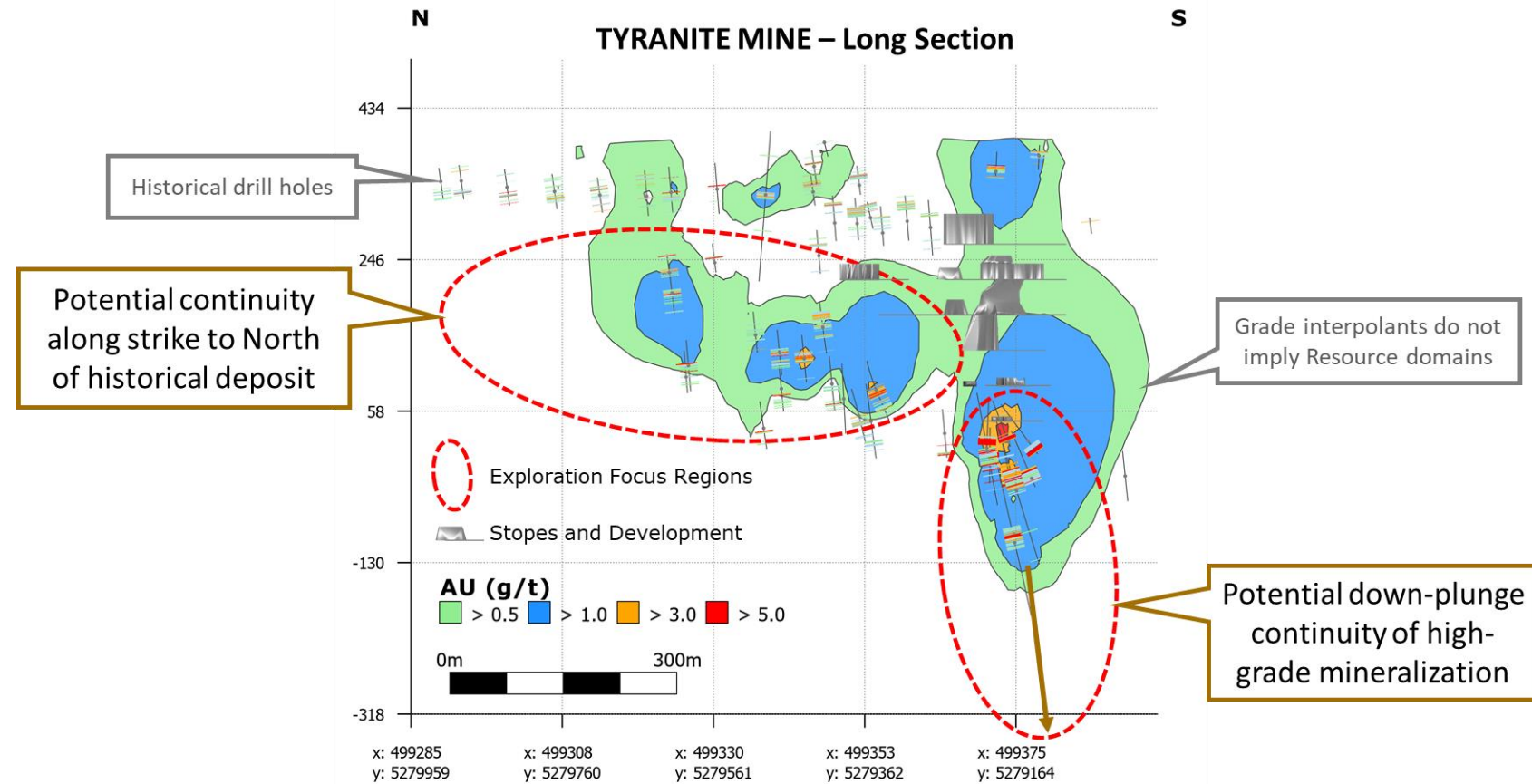
4. Duggan West Trend

- 400m West of mineralized, historically drilled Duggan Zone.
- Interpretation of new geophysical inversion modelling suggest a geological and structural setting similar to Tyranite.



1. TYRANITE CONTINUITY BELOW HISTORICAL DEVELOPMENT

- Former production with significant infrastructure still in place
- Structure is open to the south and at depth
- 5,000-metre drilling program targeting expansion of high-grade zone



INFRASTRUCTURE AT TYRANITE



Headframe



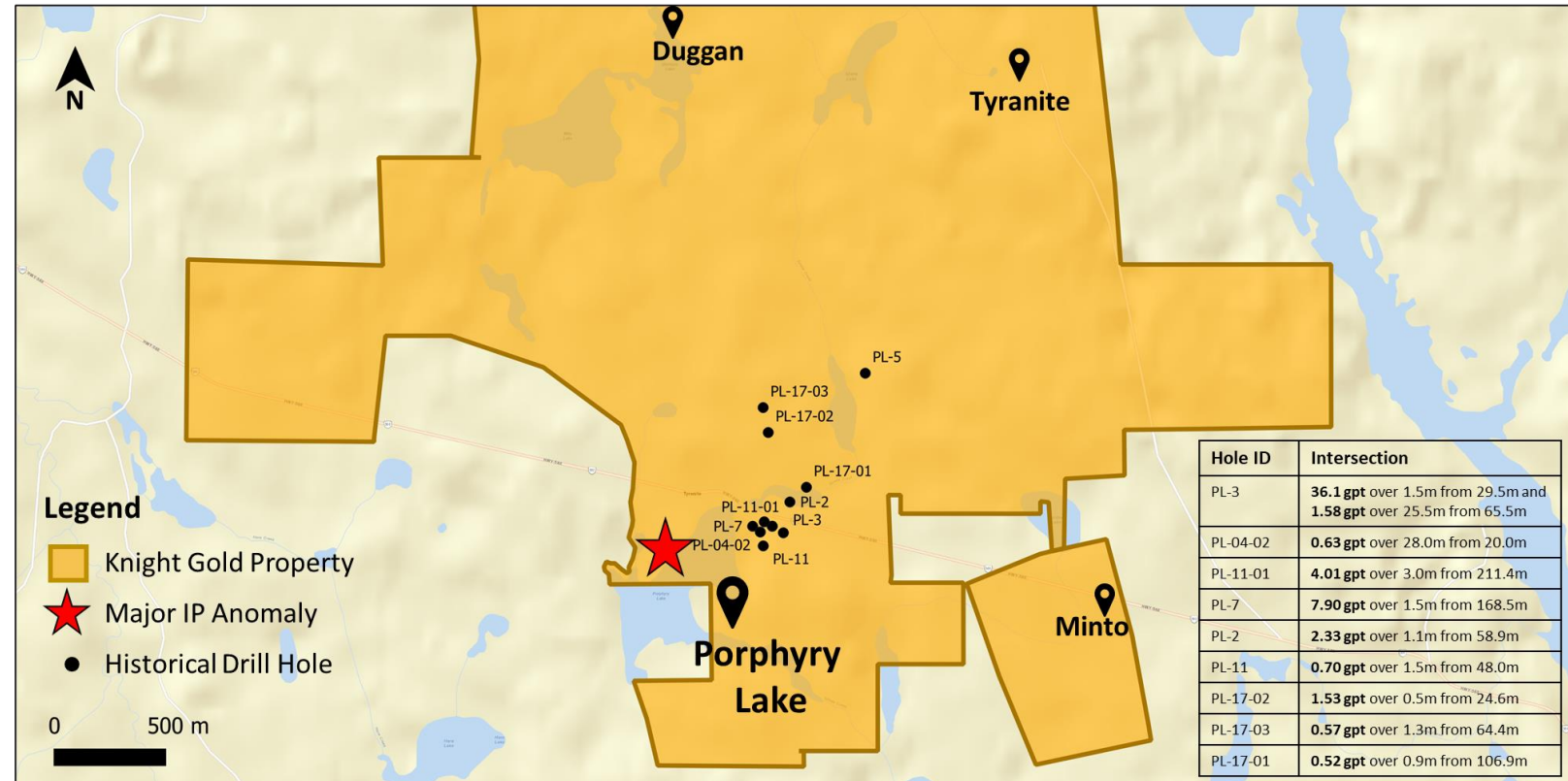
Hoist



2. HIGH PRIORITY GEOPHYSICAL ANOMALY AT PORPHYRY LAKE

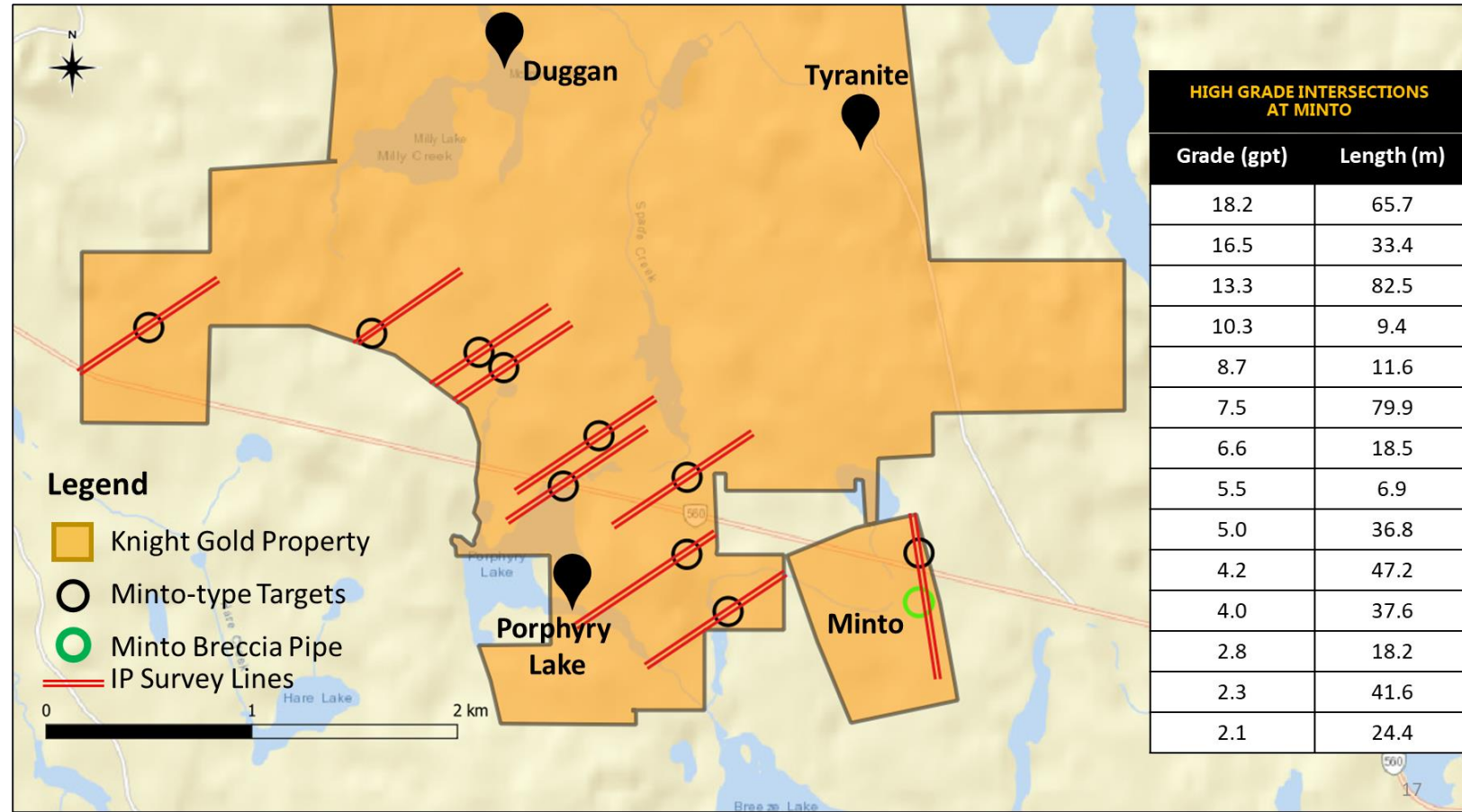
TARGET IDENTIFICATION AND DRILLING (650 METRES)

- Major untested IP high chargeability / low resistivity anomaly over 300m long
- Multiple significant historical gold intersections
- Target has not previously been drill tested



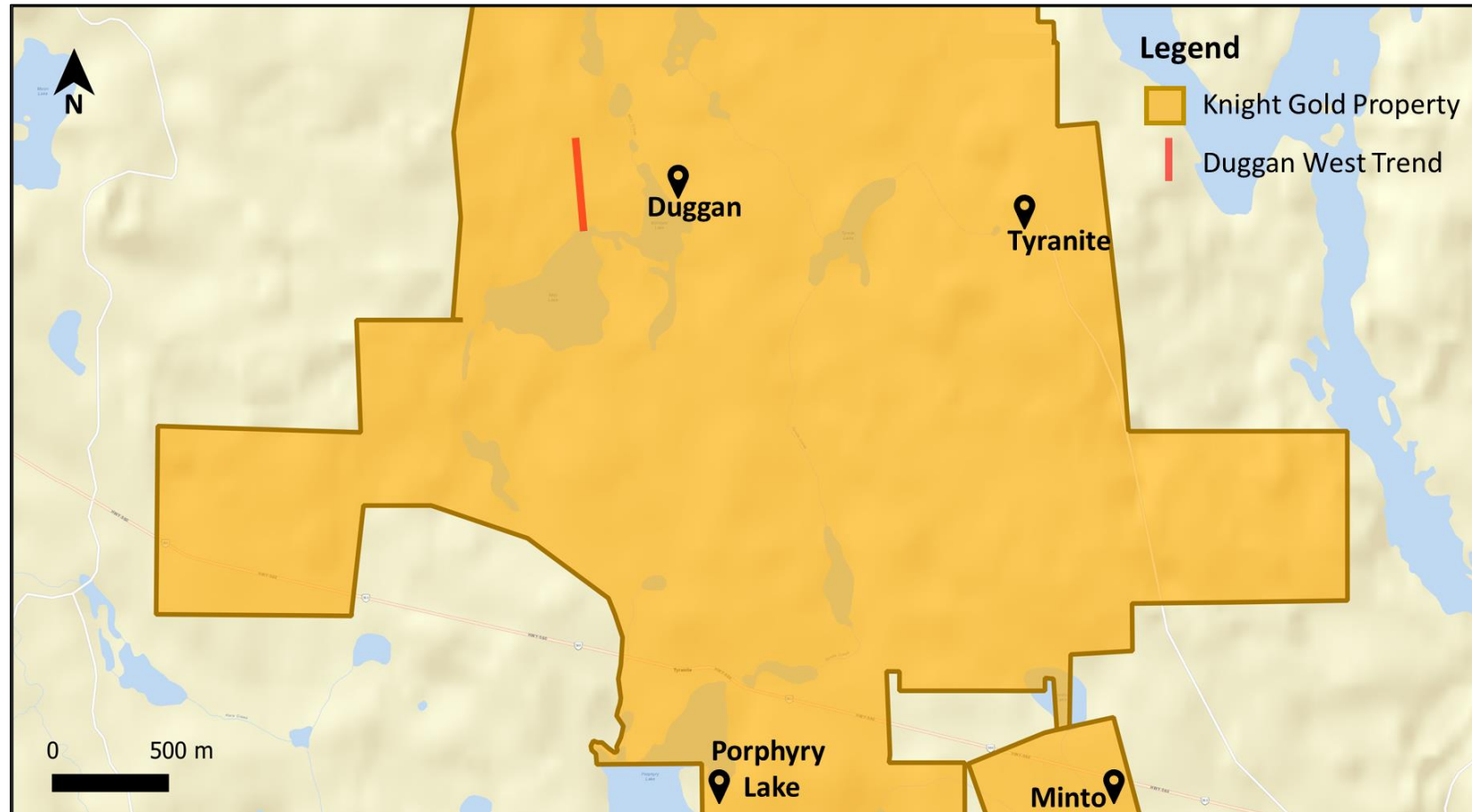
3. NEW MINTO-STYLE TARGETS DISCOVERED

- ~36 magnetic anomalies (targets) identified within the same formation that hosts Minto and Porphyry Lake systems
- Ground sampling confirmed 10 targets for follow up IP surveying
- Anomalous targets from IP surveying will be drill tested
- 550 metres of drilling budgeted



4. DUGGAN WEST TREND

- About 400m West of the historically drilled Duggan Zone
- Identified as a geological and structural setting similar to the Tyranite Mine.
- Geological and structural interpretation based on recently completed inversion modelling of high-resolution aeromagnetic data.
- 2,700m of drilling budgeted.



McGARRY PROJECT

- Adjacent to Kerr-Addison Mine with 2.4km of the Cadillac Break
- Geological similarities with Kerr Addison:
 - Larder Lake Group with mafic and ultramafic volcanics
 - Mineralization in Flow Ore & Green Carbonate Ore
- Infrastructure in place including:
 - Headframe, shaft, hoist, electrical substation, workshop, core facility and tailings facility
- Historical Resource Estimate at McGarry:
 - 8.57 gpt (123,000 ounces gold) in 447,000t Indicated
 - 5.83 gpt (30,000 ounces gold) in 157,000t Inferred



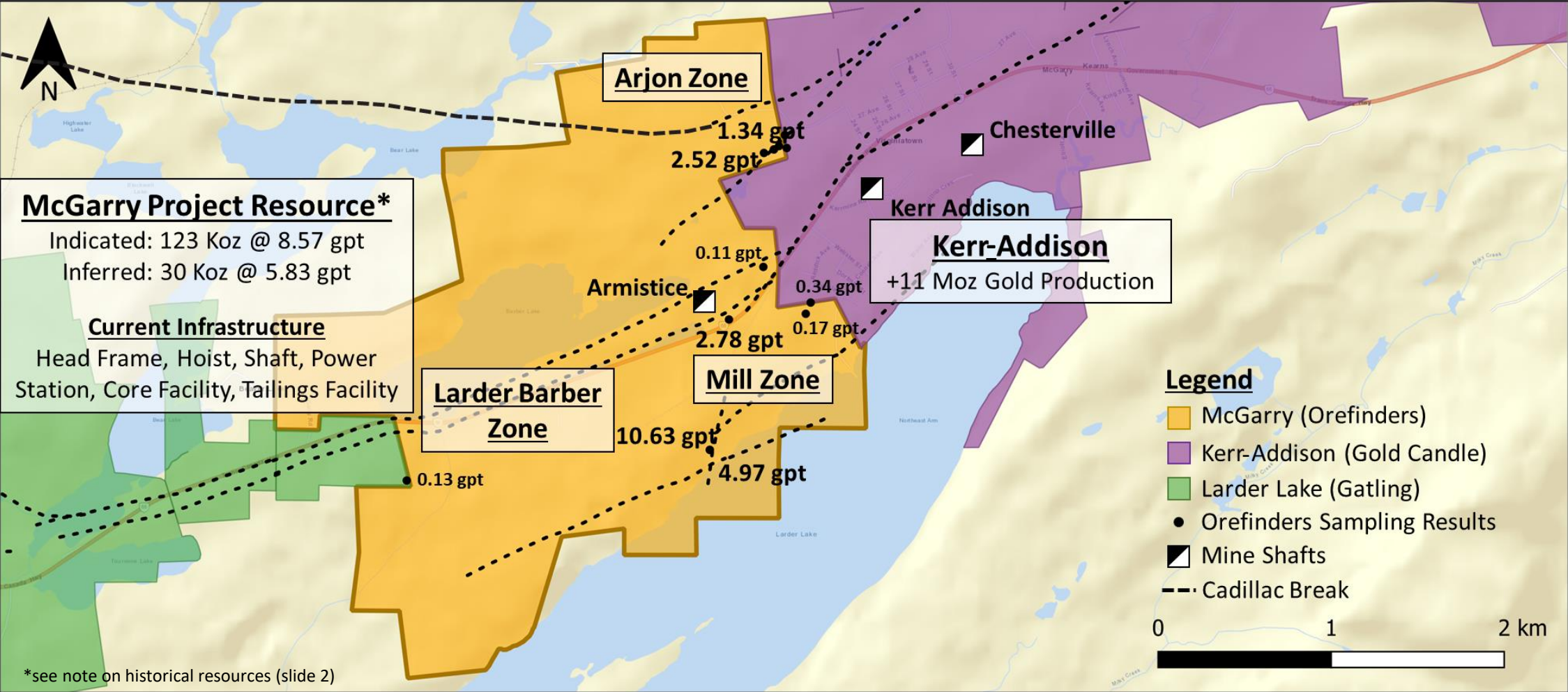
McGarry Head Frame



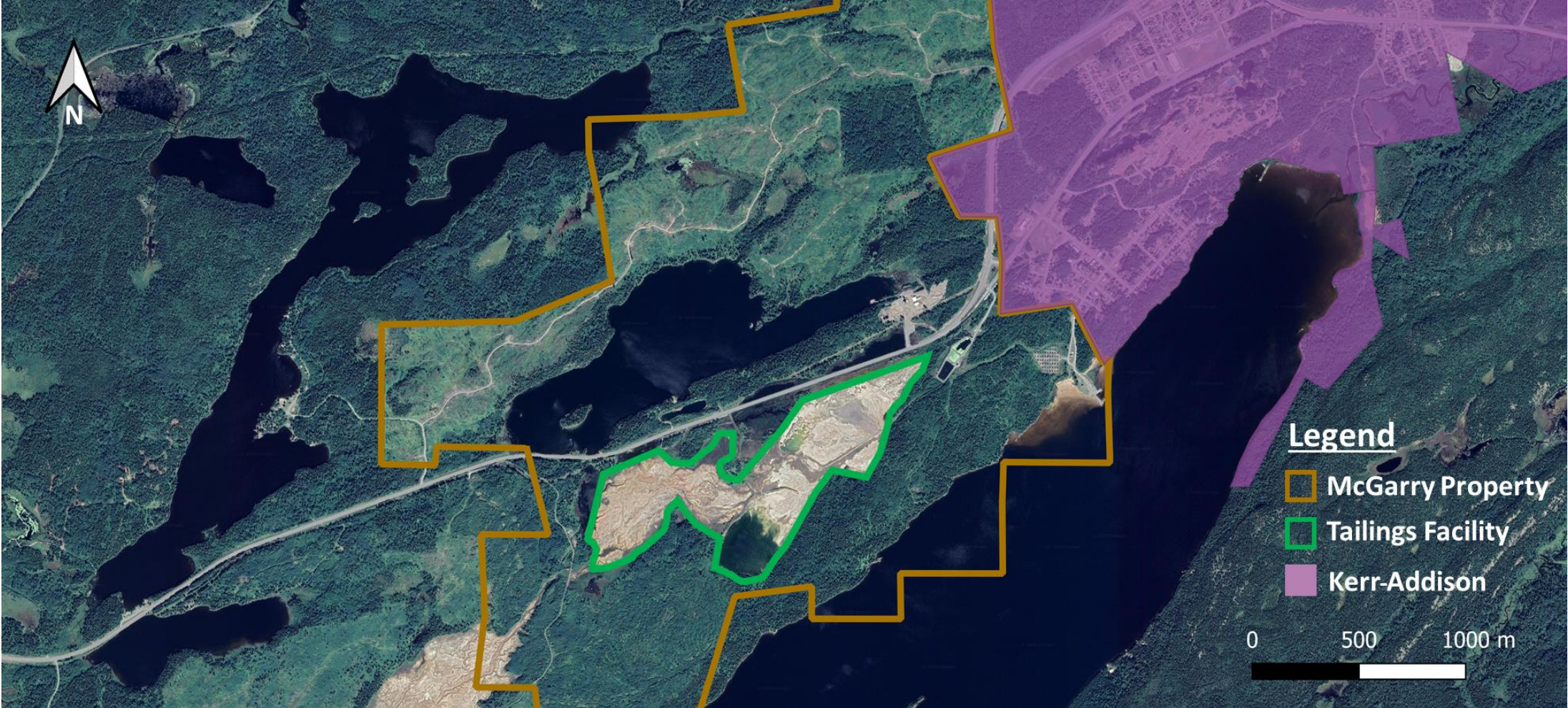
Barber-Larder Zone Pit



HIGH POTENTIAL ZONES AT MCGARRY



KERR-ADDISON MINE TAILINGS FACILITY



McGARRY INFRASTRUCTURE



1



2



3



4



5

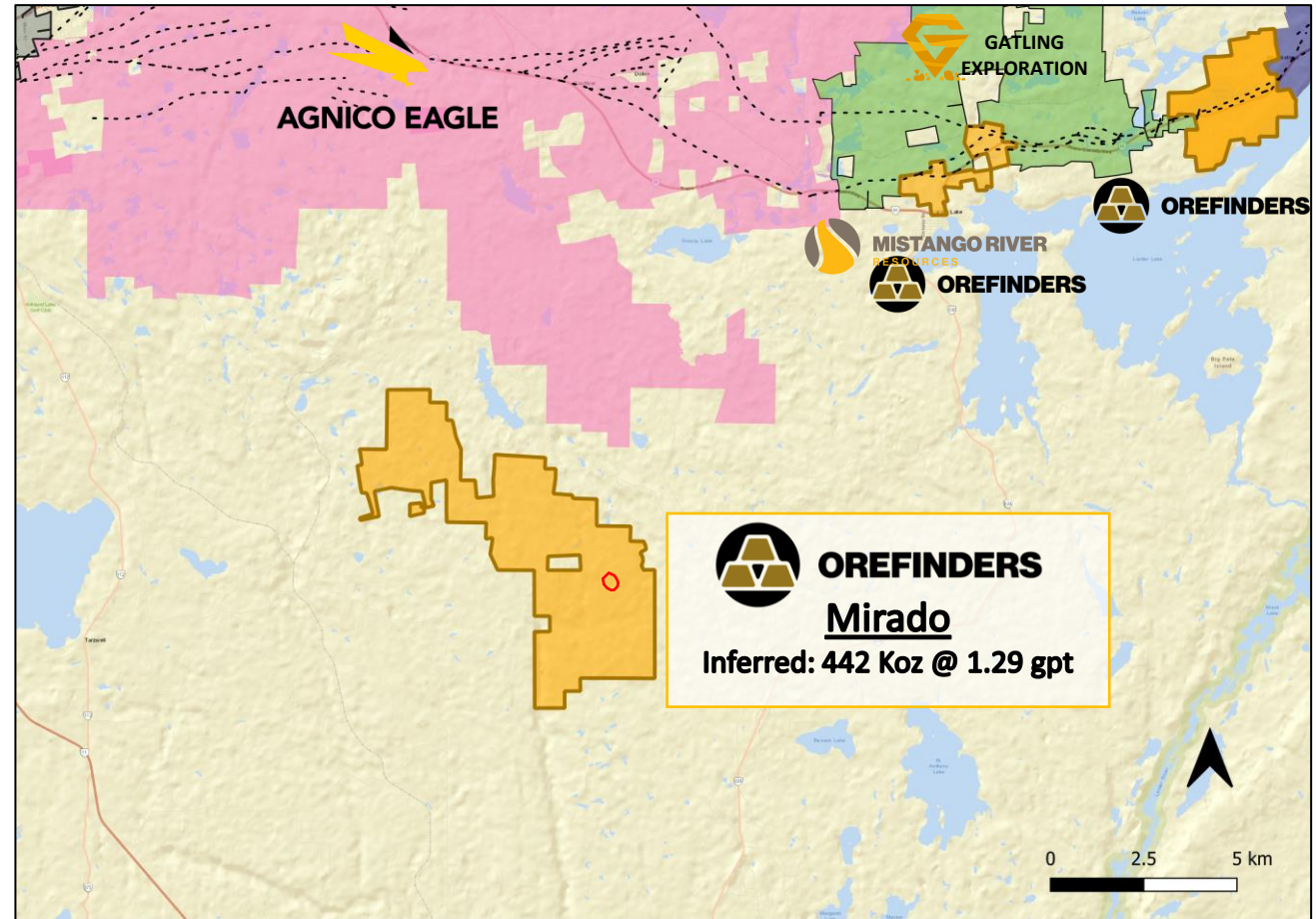
1: Headframe
2: Offices/Structures on Site
3: Hoist

4: Electrical Substations
5: Control Station



MIRADO PROJECT

- 35km SE of Kirkland Lake
- 2013 Inferred Resource Estimate (Open Pit + Underground + Stockpiles): 10,618,000t @ 1.29 gpt gold (~440 koz)
- 2018 PEA on South Zone:
 - 158% IRR;
 - Indicated resource: 559,000t @ 2.61 gpt gold (46.9 koz)
 - Inferred resource: 382,000t @ 2.66 gpt gold (32.7 koz)



STRATEGIC POSITIONS IN OTHER COMPANIES



MISTANGO RIVER
RESOURCES

Mistango River Resources - Key Metrics

18% Ownership

Canadian Securities Exchange	CSE: MIS
Shares Outstanding (m)	104
Market Cap (\$M)	33
Flagship Assets (Gold)	Kirkland West Omega

For more information on Mistango, please visit www.mistango.com



QC COPPER
& **GOLD**

QC Copper & Gold - Key Metrics

9% Ownership

TSX Venture Exchange	TSXV: PORE
Shares Outstanding (m)	70.7
Market Cap (\$M)	4.4
Flagship Assets (Copper/Gold)	Opemiska Copper Complex

For more information on QC Copper & Gold, please visit www.qccopper.com



AMERICAN EAGLE GOLD

Orefinders owns a 26% equity position in American Eagle Gold (private co), which is exploring its flagship Golden Trend project on the Cortez in Nevada, USA.

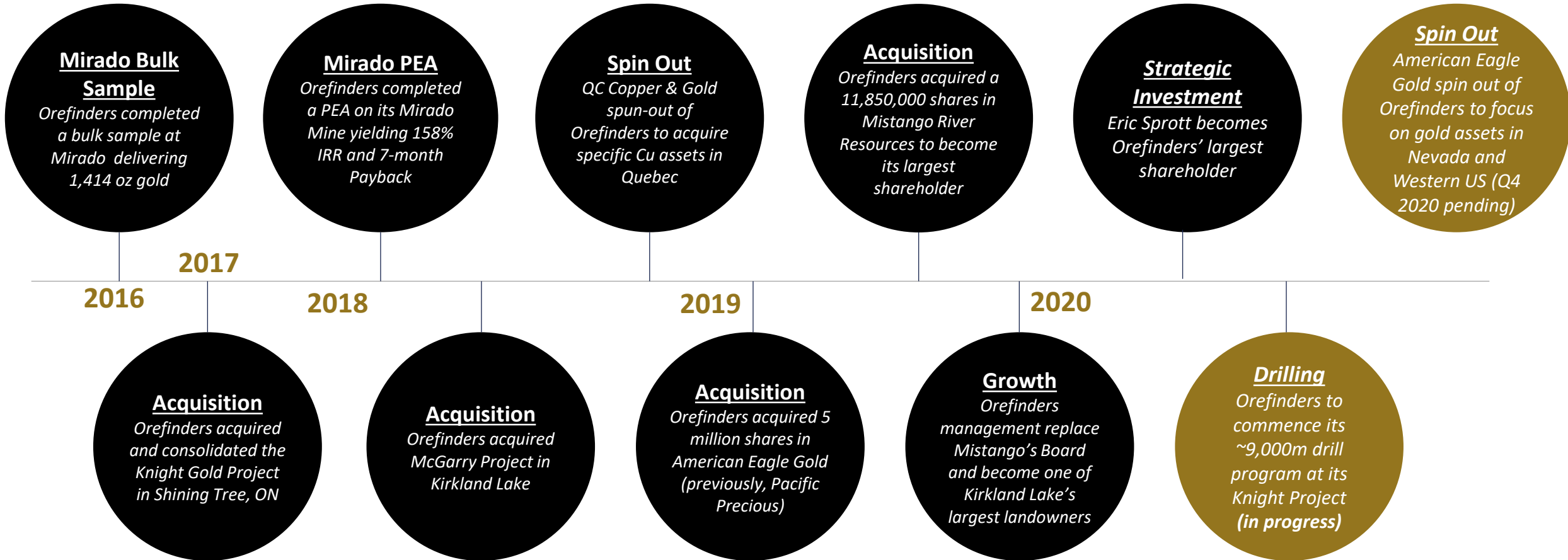
Golden Trend is located adjacent to +15Moz of gold and neighbours Nevada Gold Mines' multi-million-ounce Cortez mine and Goldrush project.

American Eagle has planned an IPO in Q4/2020



OREFINDERS

OREFINDERS GROWTH & UPCOMING CATALYSTS



BOARD & MANAGEMENT



Stephen Stewart – CEO and Director

- 15 years of experience in the resource and finance industries
- Focused on the M&A, exploration and development of resource assets
- Held senior officer with numerous TSX Venture companies.



Alexander Stewart – Director

- Over 40 years of experience in the practice of securities law and natural resource investment. In the past he was the
- Founder behind a number of mining projects including the Cote Lake Project and the Eagle One deposit.



Charles Beaudry –Director

- Geologist with more than 35 years of experience across the globe
- 17 years with Noranda-Falconbridge-Xstrata as well as a tenure with IAMGOLD as General Manager of New Business Opportunities.



Claude Bouchard – Director

- Mining engineer with +30 years experience
- Previously held senior management positions at the Levack and Footwall deposits for FNX Mining Company Inc. and for Rubicon Resources.



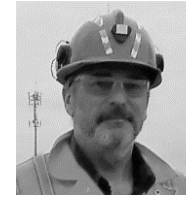
Tony Moreau – Director

- Tony is the Head of Innovation at IAMGOLD and was previously manager of Special Projects.
- Previous experience in the continuous improvement function at the Rosebel Gold Mine and was lead on IAMGOLD's international mining company peer benchmarking program.



Jeffrey Potwarka – CFO

- Chartered Professional Accountant and Certified Management Accountant with +20 years experience with Canadian small cap companies.



Dr. Keith Benn – VP Exploration

- PhD in Structural Geology and most recently Director of Structural Geology at Goldcorp Inc.
- Extensive experience in the Abitibi Greenstone belt and other regions in Canada, Africa and South America.



Gautam Narayanan – VP Corporate Development

- Previously worked in equity research covering Base and Precious Metals at Canaccord Genuity
- Former consultant focusing on natural resource investments-- primarily covering the global phosphate and potash industry.



Antoine Schwartzman – Geology Manager

- Project Geologist managing and coordinating exploration activities.
- BSc and MSc in Geology



CONTACT Us

Head Office

55 University Avenue, Suite 1805
Toronto, ON M5J 2H7

Investor Information

INFO@OREFINDERS.CA
416.644.1567



OREFINDERS